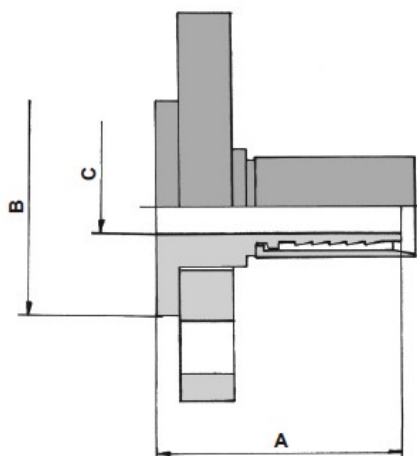


## Raccordo flangia girevole UNI/ANSI

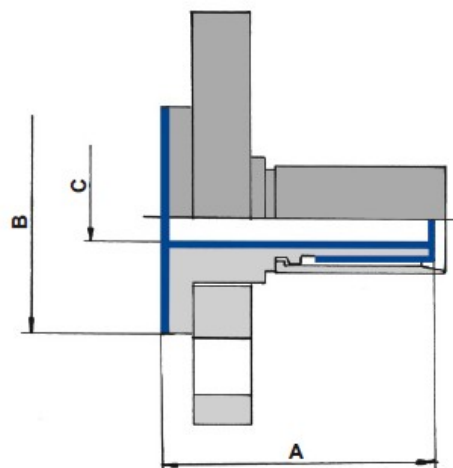
AISI 304/316 - A105 - alluminio - PP

Ø int. tubo	A	B	C	Flange	
				UNI	ANSI
13	63	45	10	DN 15	1/2"
19	65	58	16	DN 20	3/4"
25	66	68	21,5	DN 25	1"
32	76	78	27,5	DN 32	1" 1/4
38	76	88	33	DN 40	1" 1/2
51	80	100	44,5	DN 50	2"
63	110	120	55	DN 65	2" 1/2
76	112	138	68	DN 80	3"



## Esecuzione con raccordo sbordato in PTFE

Ø int. tubo	A	B	C	Flange	
				UNI	ANSI
13	65	45	7	DN 15	1/2"
19	68	55	13	DN 20	3/4"
25	68	65	17	DN 25	1"
32	79	75	24	DN 32	1" 1/4
38	79	85	28	DN 40	1" 1/2
51	85	100	40	DN 50	2"
63	115	120	50	DN 65	2" 1/2
76	118	130	63	DN 80	3"



## Esecuzione in sbordatura diretta

Ø int. tubo	A	B	C	Flange	
				UNI	ANSI
13	45	35	13	DN 15	1/2"
19	51	40	19	DN 20	3/4"
25	51	50	25	DN 25	1"
32	52	65	32	DN 32	1" 1/4
38	57	80	38	DN 38	1" 1/2
51	63	90	51	DN 51	2"
63	60	110	63	DN 65	2" 1/2
76	60	125	76	DN 80	3"

